

April 2015

FIGURE A1-34

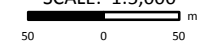
**REROUTE AT
SKP 894.3 - 895.1**

**ENBRIDGE PIPELINES INC.
LINE 3 REPLACEMENT
PROGRAM**

10427

- Station Kilometre Post
- Reroute Station Kilometre Post
- Line 3 Replacement Pipeline Route (Route Filed November 5, 2014)
- Line 3 Replacement Pipeline Reroute
- Construction Right-of-Way
- Extra Temporary Workspace
- Access Road/Shoofly
- Enbridge Property Extension
- Existing Enbridge Station/Terminal
- 892 Highway
- Road
- Access/Resource Road
- +— Railway
- City/Town/Village

SCALE: 1:5,000



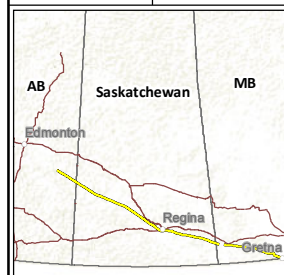
(All Locations Approximate)

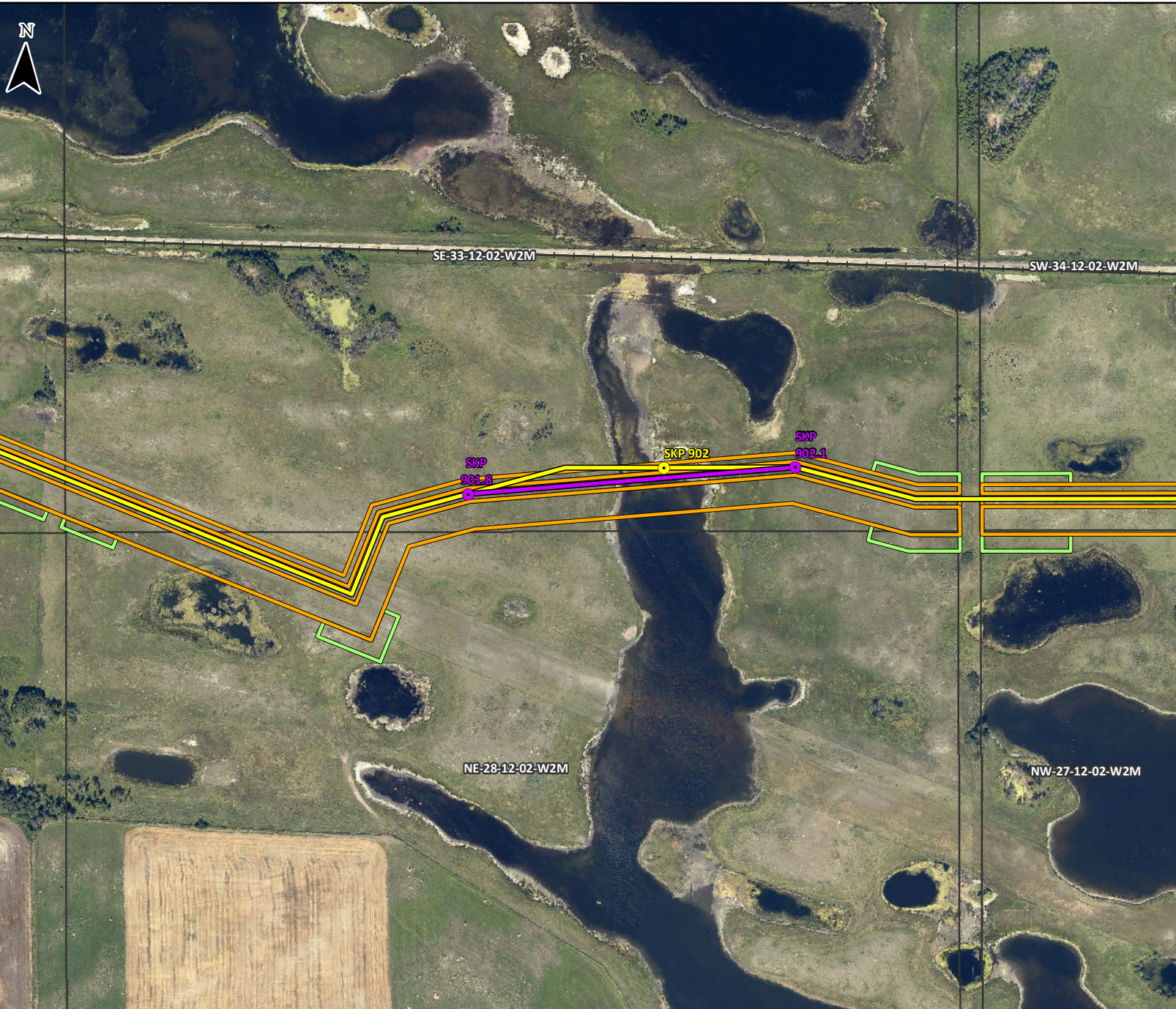


Enbridge Lambert Conformal Conic
Satellite Imagery: Enbridge Pipelines Inc. 2013; licensed by
Pictometry 2012; Roads: SHS Inc. 2015; Railway: NRCan 2012.

Although there is no reason to believe that there are any errors associated with the data used to generate this product or in the product itself, users of these data are advised that errors in the data may be present.

Mapped By: WL Checked By: CN





April 2015

FIGURE A1-35

**REROUTE AT
SKP 901.8 - 902.1**

**ENBRIDGE PIPELINES INC.
LINE 3 REPLACEMENT
PROGRAM**

10427

- Station Kilometre Post
- Reroute Station Kilometre Post
- Line 3 Replacement Pipeline Route (Route Filed November 5, 2014)
- Line 3 Replacement Pipeline Reroute
- Construction Right-of-Way
- Extra Temporary Workspace
- Access Road/Shoofly
- Enbridge Property Extension
- Existing Enbridge Station/Terminal
- X 892 Highway
- Road
- Access/Resource Road
- Railway
- City/Town/Village

SCALE: 1:5,000

50 0 50 m

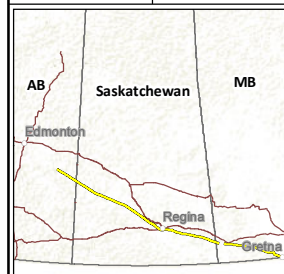
(All Locations Approximate)

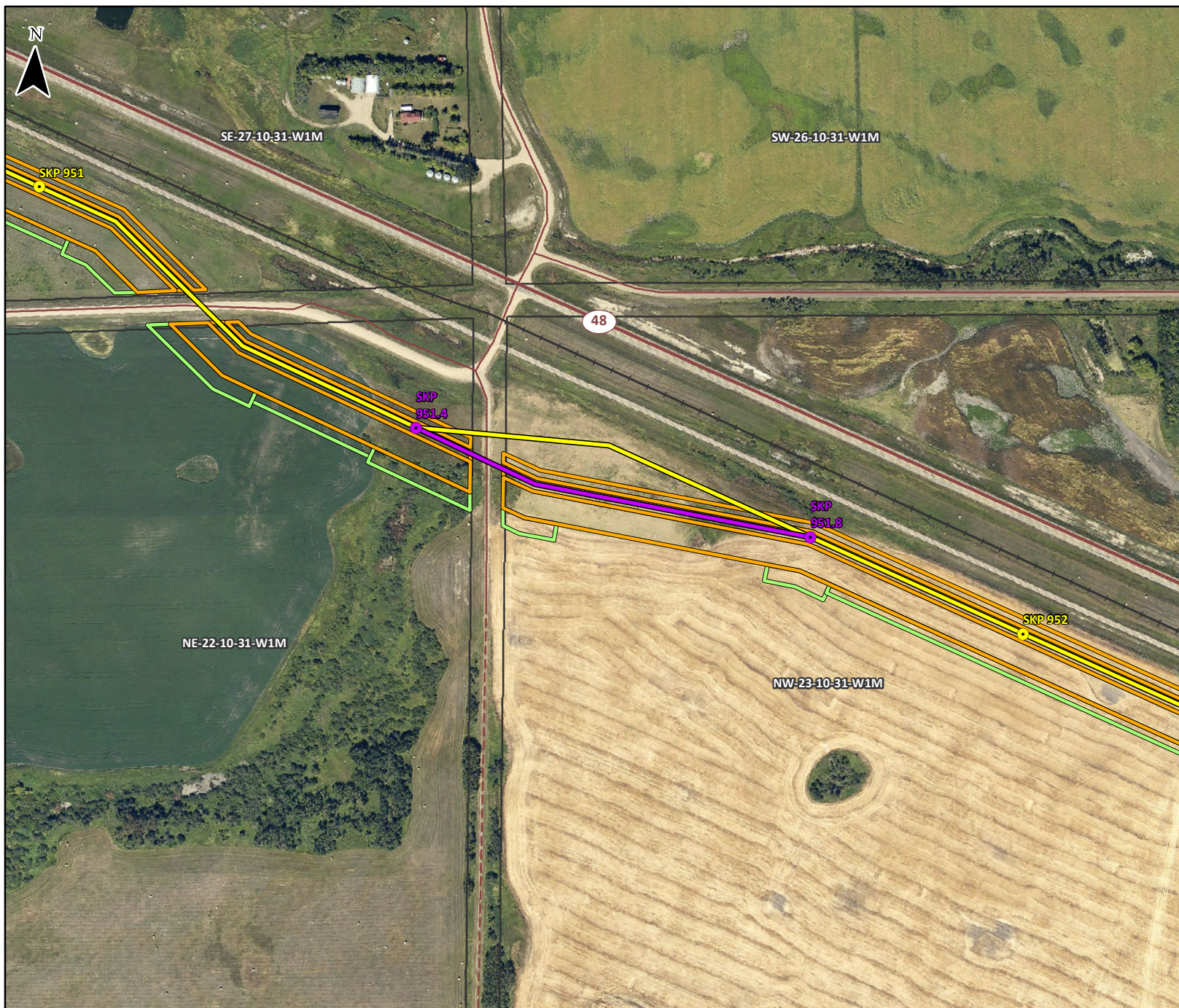


Enbridge Lambert Conformal Conic
Satellite Imagery: Enbridge Pipelines Inc. 2013; licensed by
Pictometry 2012; Roads: SHS Inc. 2015; Railway: NRCan 2012.

Although there is no reason to believe that there are any errors associated with the data used to generate this product or in the product itself, users of these data are advised that errors in the data may be present.

Mapped By: WL Checked By: CN





April 2015

FIGURE A1-36

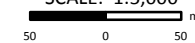
**REROUTE AT
SKP 951.4 - 951.8**

**ENBRIDGE PIPELINES INC.
LINE 3 REPLACEMENT
PROGRAM**

10427

- Station Kilometre Post
- Reroute Station Kilometre Post
- Line 3 Replacement Pipeline Route (Route Filed November 5, 2014)
- Line 3 Replacement Pipeline Reroute
- Construction Right-of-Way
- Extra Temporary Workspace
- Access Road/Shoofly
- Enbridge Property Extension
- Existing Enbridge Station/Terminal
- Highway
- Road
- Access/Resource Road
- Railway
- City/Town/Village

SCALE: 1:5,000



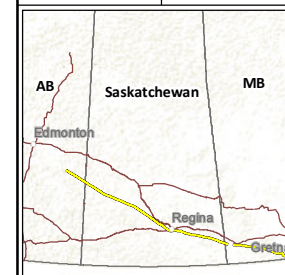
(All Locations Approximate)

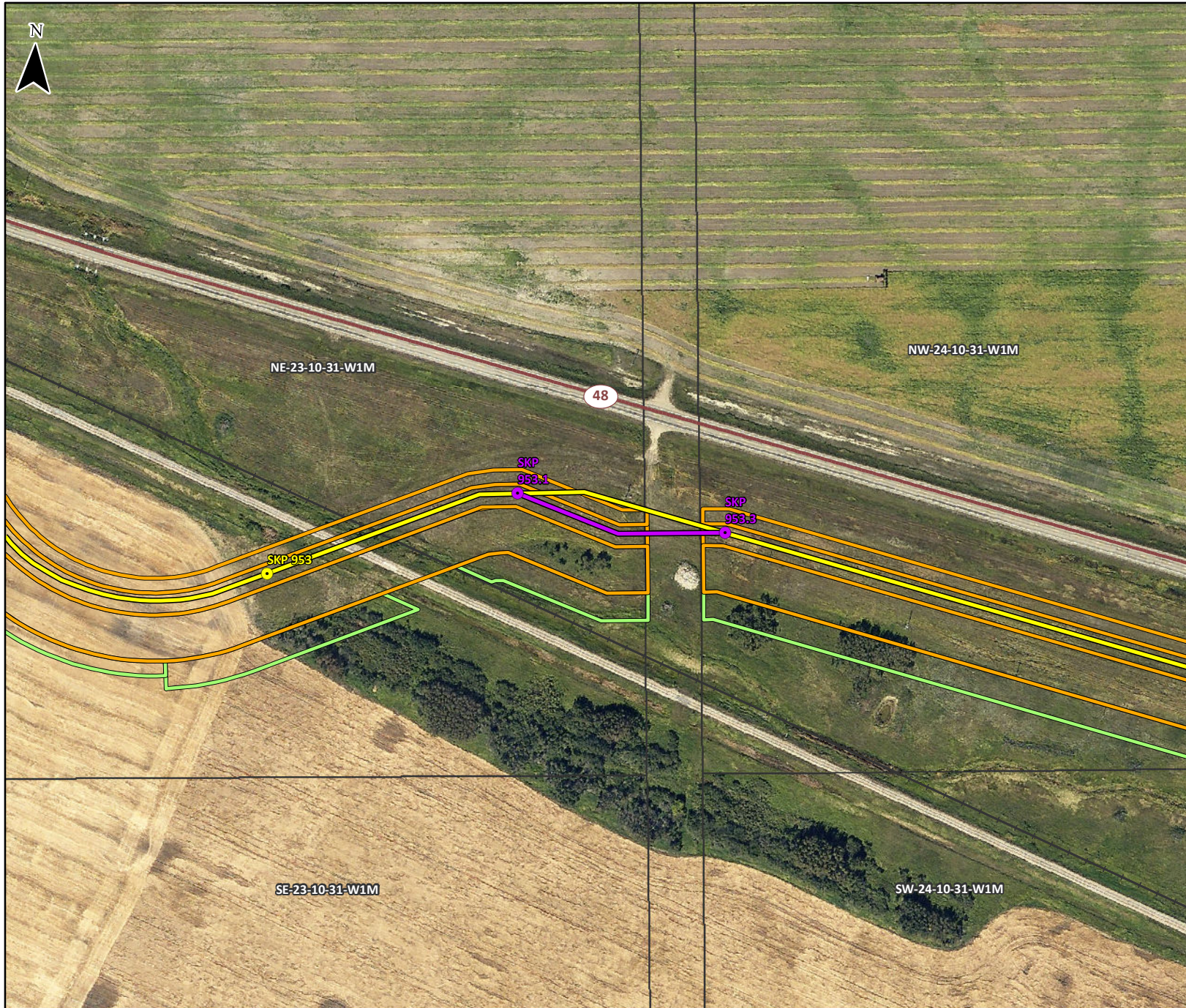


Enbridge Lambert Conformal Conic.
Satellite Imagery: Enbridge Pipelines Inc. 2013; licensed by
Pictometry 2012; Roads: SHS Inc. 2015; Railway: NRCan 2012.

Although there is no reason to believe that there are any errors associated with the data used to generate this product, or in the product itself, users of these data are advised that errors in the data may be present.

Mapped By: WL Checked By: CN





April 2015

FIGURE A1-37

**REROUTE AT
SKP 953.1 - 953.3**

**ENBRIDGE PIPELINES INC.
LINE 3 REPLACEMENT
PROGRAM**

10427

- Station Kilometre Post
- Reroute Station Kilometre Post
- Line 3 Replacement Pipeline Route (Route Filed November 5, 2014)
- Line 3 Replacement Pipeline Reroute
- Construction Right-of-Way
- Extra Temporary Workspace
- Access Road/Shoofly
- Enbridge Property Extension
- Existing Enbridge Station/Terminal
- Highway
- Road
- Access/Resource Road
- Railway
- City/Town/Village

SCALE: 1:3,000



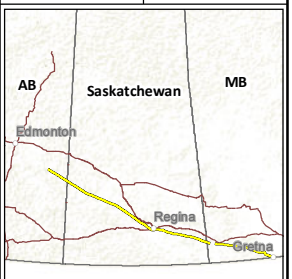
(All Locations Approximate)



Enbridge Lambert Conformal Conic
Satellite Imagery: Enbridge Pipelines Inc. 2013; licensed by
Pictometry 2012; Roads: JHS Inc. 2015; Railway: NRCan 2012.

Although there is no reason to believe that there are any errors associated with the data used to generate this product or in the product itself, users of these data are advised that errors in the data may be present.

Mapped By: WL Checked By: CN





April 2015

FIGURE A1-38

**REROUTE AT
SKP 968.9 - 969.0**

**ENBRIDGE PIPELINES INC.
LINE 3 REPLACEMENT
PROGRAM**

10427

- Station Kilometre Post
- Reroute Station Kilometre Post
- Line 3 Replacement Pipeline Route (Route Filed November 5, 2014)
- Line 3 Replacement Pipeline Reroute
- Construction Right-of-Way
- Extra Temporary Workspace
- || Access Road/Shoofly
- Enbridge Property Extension
- Existing Enbridge Station/Terminal
- 892 Highway
- Road
- - - Access/Resource Road
- Railway
- City/Town/Village

SCALE: 1:5,000

50 0 50 m

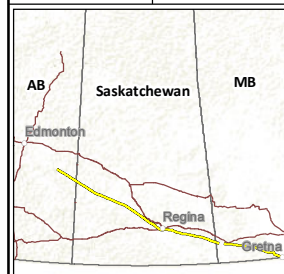
(All Locations Approximate)

tera A CH2M HILL Company

Enbridge Lambert Conformal Conic
Satellite Imagery: Enbridge Pipelines Inc. 2013; licensed by
Pictometry 2012; Roads: SHS Inc. 2015; Railway: NRCan 2012.

Although there is no reason to believe that there are any errors associated with the data used to generate this product, or in the product itself, users of these data are advised that errors in the data may be present.

Mapped By: WL Checked By: CN



April 2015

FIGURE A1-39

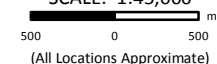
**REROUTE AT
SKP 969.4 - 980.7**

**ENBRIDGE PIPELINES INC.
LINE 3 REPLACEMENT
PROGRAM**

10427

- Station Kilometre Post
- Reroute Station Kilometre Post
- Line 3 Replacement Pipeline Route (Route Filed November 5, 2014)
- Line 3 Replacement Pipeline Reroute
- Construction Right-of-Way
- Extra Temporary Workspace
- Access Road/Shoofly
- Enbridge Property Extension
- Existing Enbridge Station/Terminal
- Highway
- Road
- Access/Resource Road
- Railway
- City/Town/Village

SCALE: 1:45,000

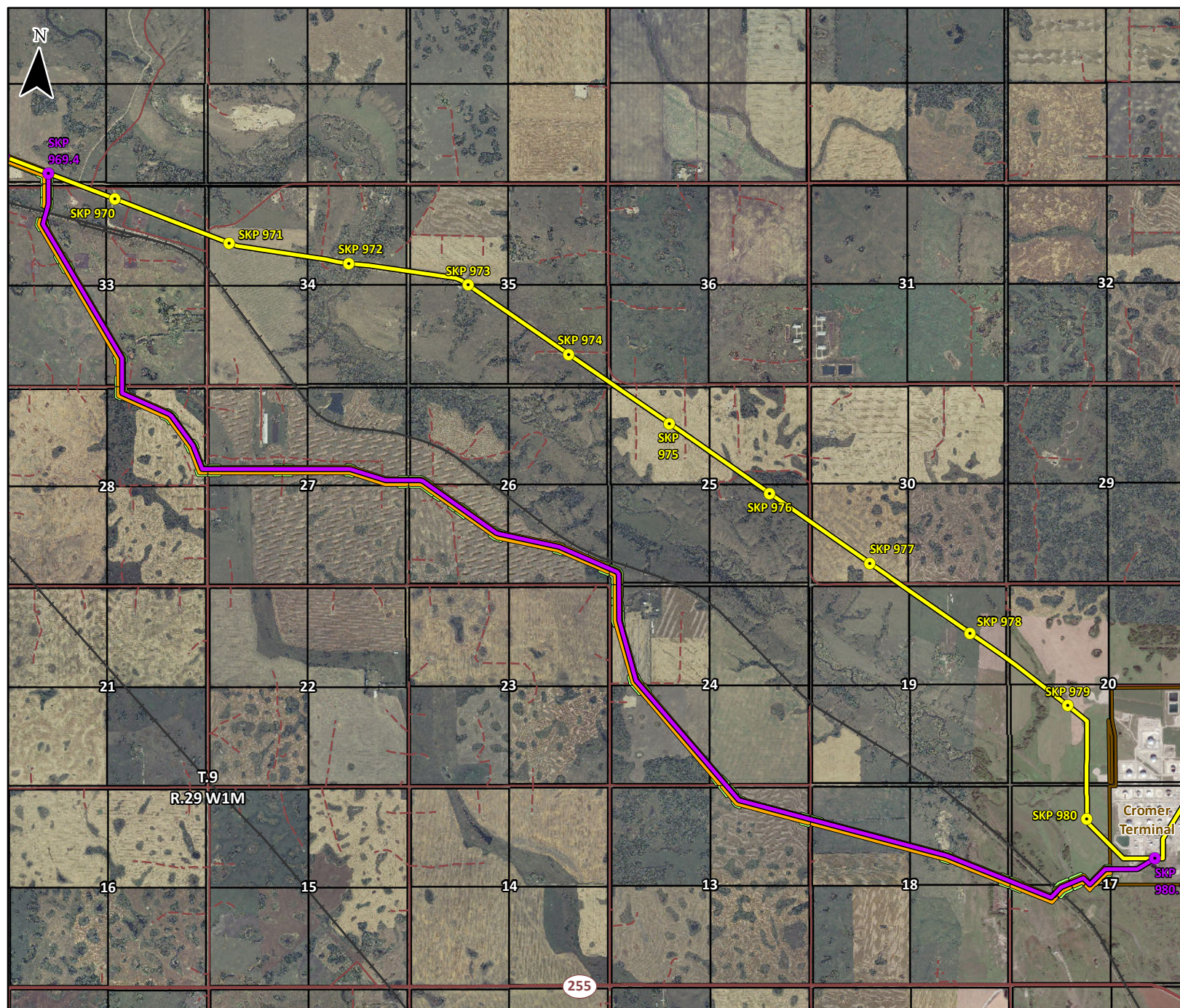
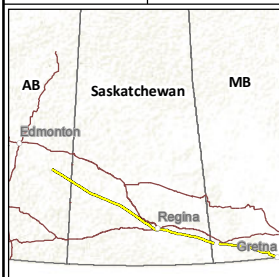


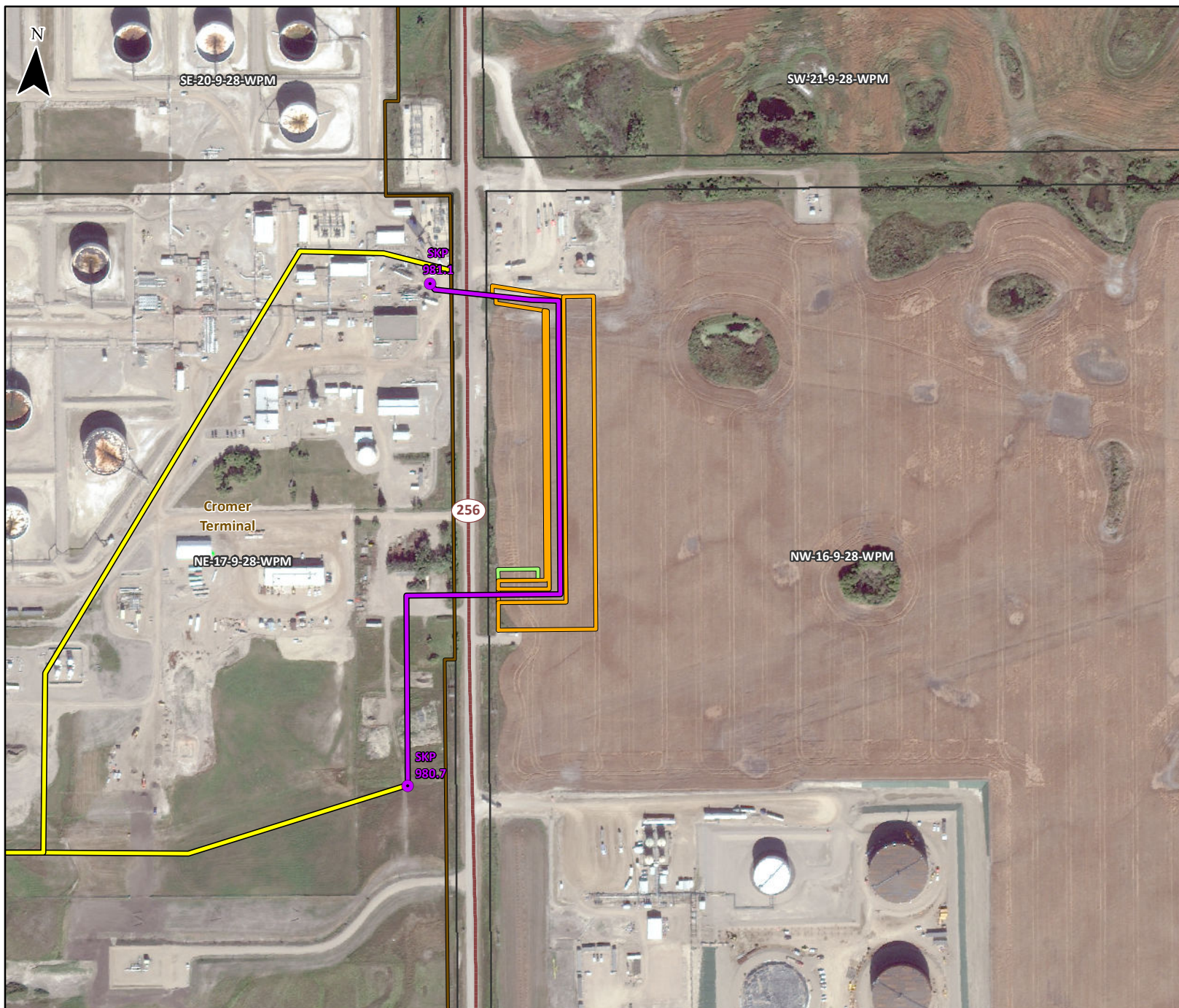
tera A CH2M HILL Company

Enbridge Lambert Conformal Conic
Satellite Imagery: Enbridge Pipelines Inc. 2013, licensed by
Pictometry 2012; Roads: SHS Inc. 2015; Railway: NRCan 2012.

Although there is no reason to believe that there are any errors associated with the data used to generate this product or in the product itself, users of these data are advised that errors in the data may be present.

Mapped By: WL Checked By: CN





April 2015

FIGURE A1-40

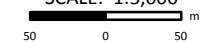
**REROUTE AT
SKP 980.7 - 981.1**

**ENBRIDGE PIPELINES INC.
LINE 3 REPLACEMENT
PROGRAM**

10427

- Station Kilometre Post
- Reroute Station Kilometre Post
- Line 3 Replacement Pipeline Route (Route Filed November 5, 2014)
- Line 3 Replacement Pipeline Reroute
- Construction Right-of-Way
- Extra Temporary Workspace
- Access Road/Shoofly
- Enbridge Property Extension
- Existing Enbridge Station/Terminal
- Highway
- Road
- Access/Resource Road
- Railway
- City/Town/Village

SCALE: 1:5,000



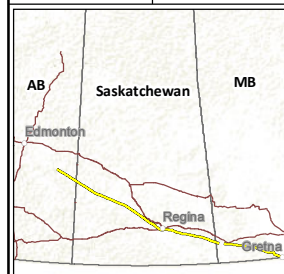
(All Locations Approximate)

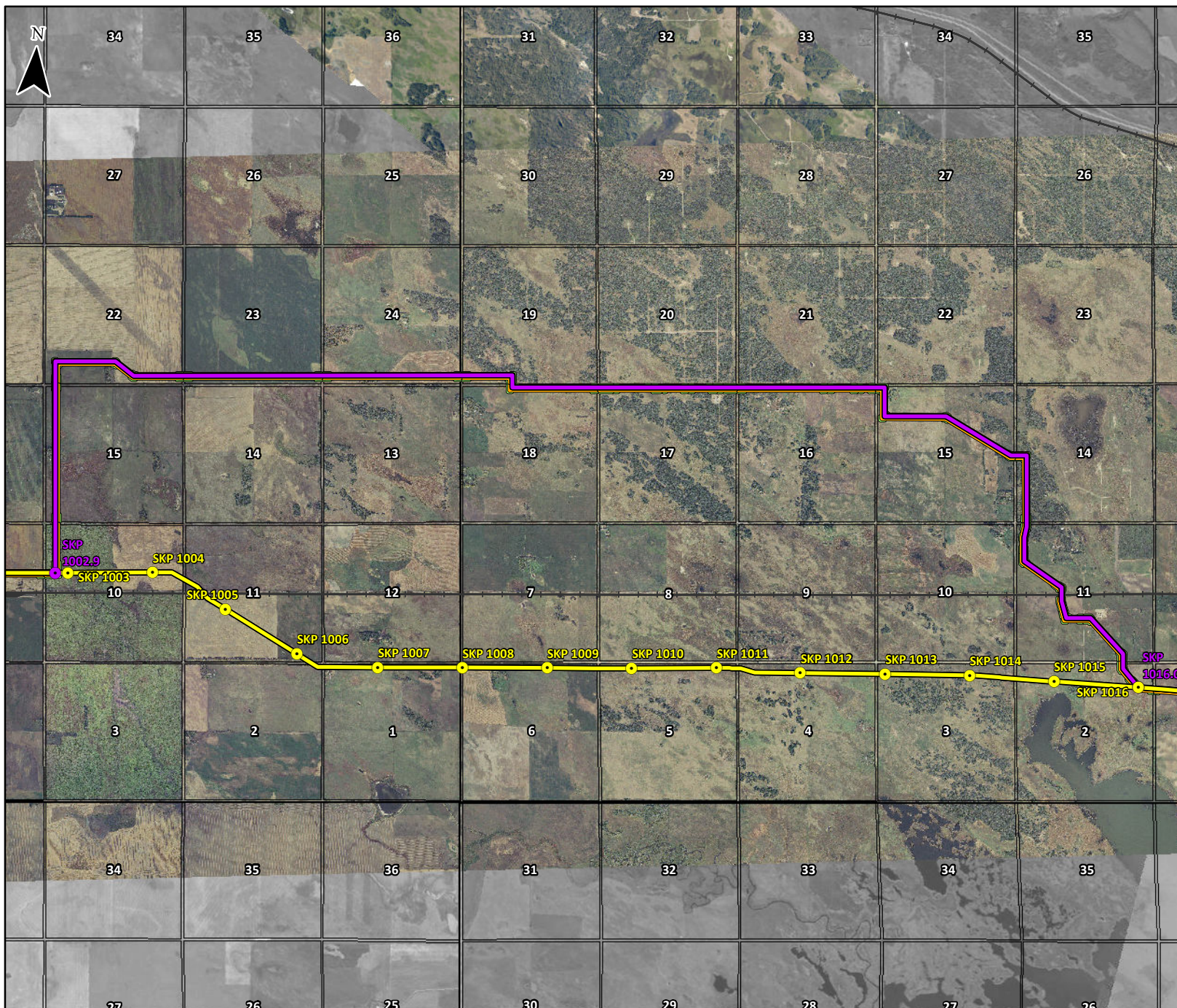
tera A CH2M HILL Company

Enbridge Lambert Conformal Conic
Satellite Imagery: Enbridge Pipelines Inc. 2013; licensed by
Pictometry 2012; Roads: SHS Inc. 2015; Railway: NRCAN 2012.

Although there is no reason to believe that there are any errors associated with the data used to generate this product or in the product itself, users of these data are advised that errors in the data may be present.

Mapped By: WL Checked By: CN





April 1915

FIGURE A1-41

**REROUTE AT
SKP 1002.9 - 1016.0**

**ENBRIDGE PIPELINES INC.
LINE 3 REPLACEMENT
PROGRAM**

10427

- Station Kilometre Post
- Reroute Station Kilometre Post
- Line 3 Replacement Pipeline Route (Route Filed November 5, 2014)
- Line 3 Replacement Pipeline Reroute
- Construction Right-of-Way
- Extra Temporary Workspace
- Access Road/Shoofly
- Enbridge Property Extension
- Existing Enbridge Station/Terminal
- X 892 Highway
- Road
- Access/Resource Road
- Railway
- City/Town/Village

SCALE: 1:65,000

1,000 0 1,000 m

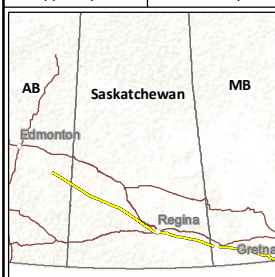
(All Locations Approximate)



Enbridge Lambert Conformal Conic
Satellite Imagery: Enbridge Pipelines Inc. 2013; licensed by
Pictometry 2012; Roads: SHS Inc. 2015; Railway: NRCan 2012.

Although there is no reason to believe that there are any errors associated with the data used to generate this product or in the product itself, users of these data are advised that errors in the data may be present.

Mapped By: WL Checked By: CN





April 2015

FIGURE A1-42

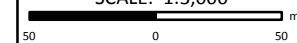
**REROUTE AT
SKP 1017.3 - 1017.4**

**ENBRIDGE PIPELINES INC.
LINE 3 REPLACEMENT
PROGRAM**

10427

- Station Kilometre Post
- Reroute Station Kilometre Post
- Line 3 Replacement Pipeline Route (Route Filed November 5, 2014)
- Line 3 Replacement Pipeline Reroute
- Construction Right-of-Way
- Extra Temporary Workspace
- Access Road/Shoofly
- Enbridge Property Extension
- Existing Enbridge Station/Terminal
- 892 Highway
- Road
- Access/Resource Road
- Railway
- City/Town/Village

SCALE: 1:3,000



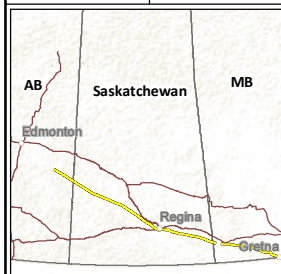
(All Locations Approximate)

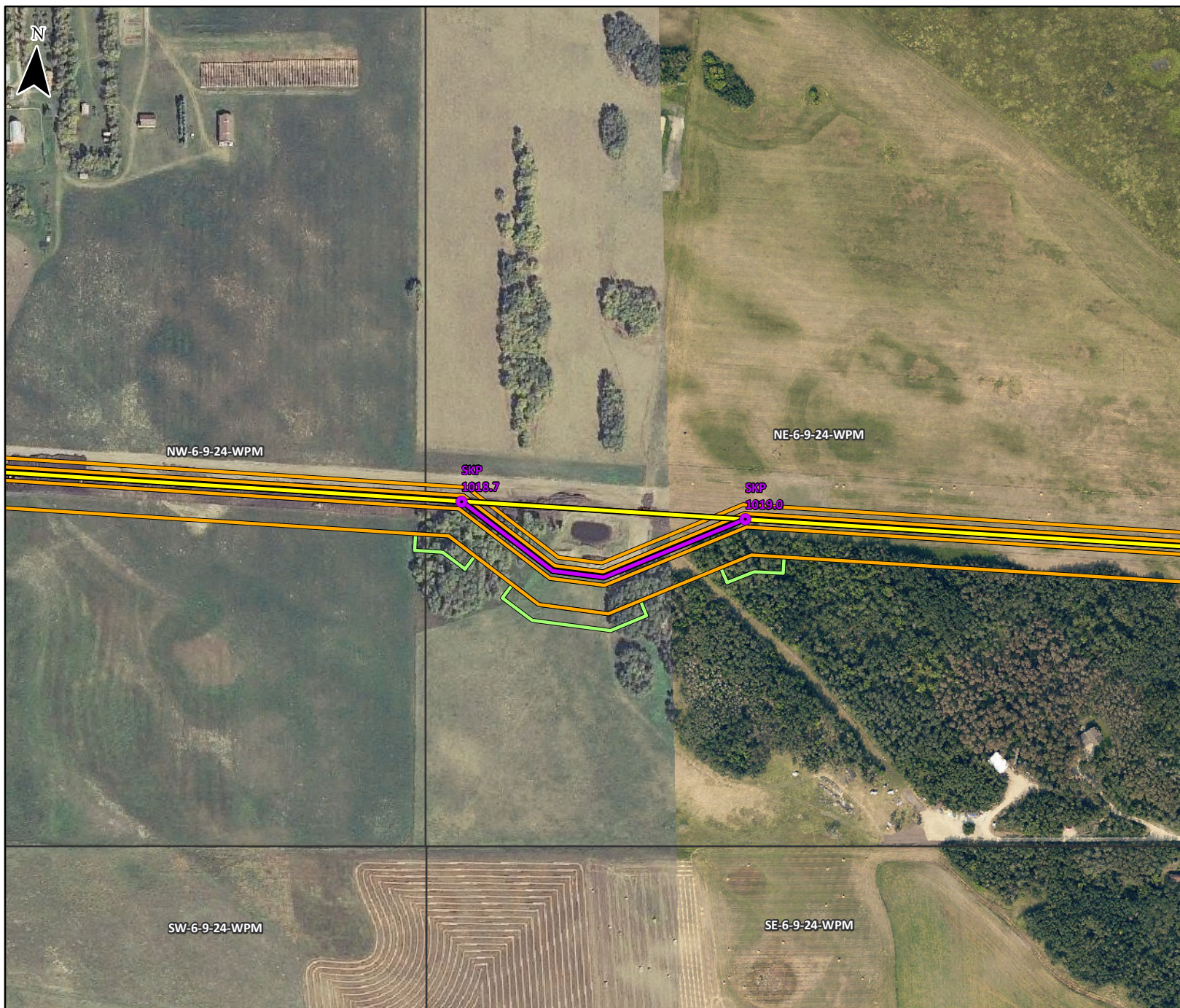


Enbridge Lambert Conformal Conic
Satellite Imagery: Enbridge Pipelines Inc. 2013; licensed by
Pictometry 2012; Roads: SHS Inc. 2015; Railway: NRCan 2012.

Although there is no reason to believe that there are any errors associated with the data used to generate this product or in the product itself, users of these data are advised that errors in the data may be present.

Mapped By: WL Checked By: CN





April 2015

FIGURE A1-43

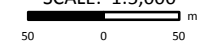
**REROUTE AT
SKP 1018.7 - 1019.0**

**ENBRIDGE PIPELINES INC.
LINE 3 REPLACEMENT
PROGRAM**

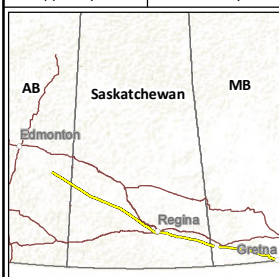
10427

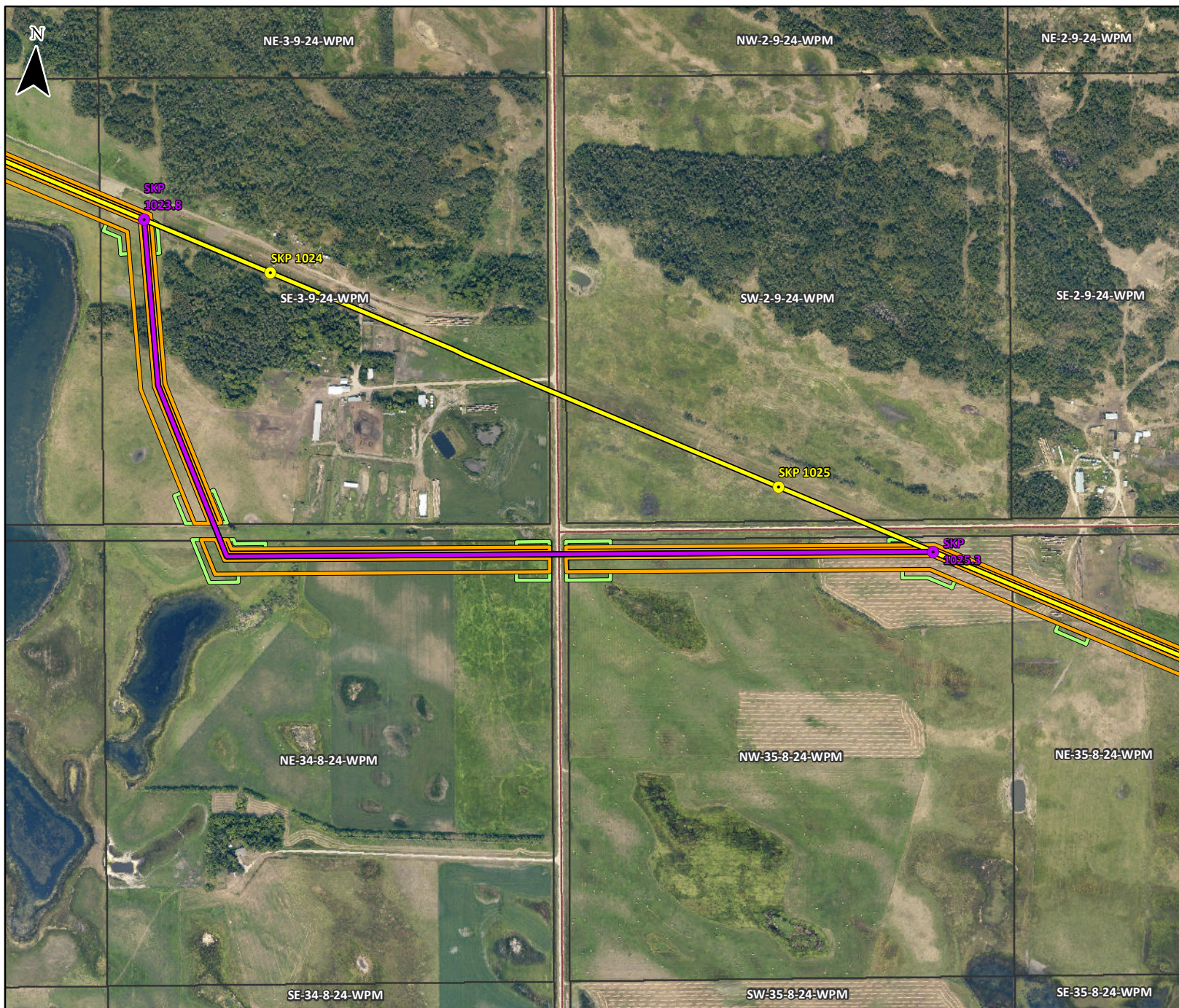
- Station Kilometre Post
- Reroute Station Kilometre Post
- Line 3 Replacement Pipeline Route (Route Filed November 5, 2014)
- Line 3 Replacement Pipeline Reroute
- Construction Right-of-Way
- Extra Temporary Workspace
- Access Road/Shoofly
- Enbridge Property Extension
- Existing Enbridge Station/Terminal
- Highway
- Road
- Access/Resource Road
- Railway
- City/Town/Village

SCALE: 1:5,000



(All Locations Approximate)





April 2015

FIGURE A1-44

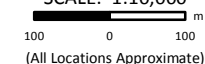
REROUTE AT SKP 1023.8 - 1025.3

ENBRIDGE PIPELINES INC. LINE 3 REPLACEMENT PROGRAM

10427

- Station Kilometre Post
- Reroute Station Kilometre Post
- Line 3 Replacement Pipeline Route (Route Filed November 5, 2014)
- Line 3 Replacement Pipeline Reroute
- Construction Right-of-Way
- Extra Temporary Workspace
- Access Road/Shoofly
- Enbridge Property Extension
- Existing Enbridge Station/Terminal
- 892 Highway
- Road
- Access/Resource Road
- Railway
- City/Town/Village

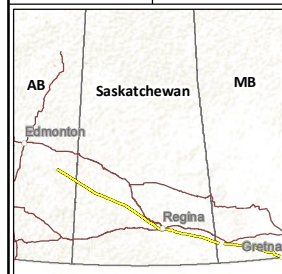
SCALE: 1:10,000

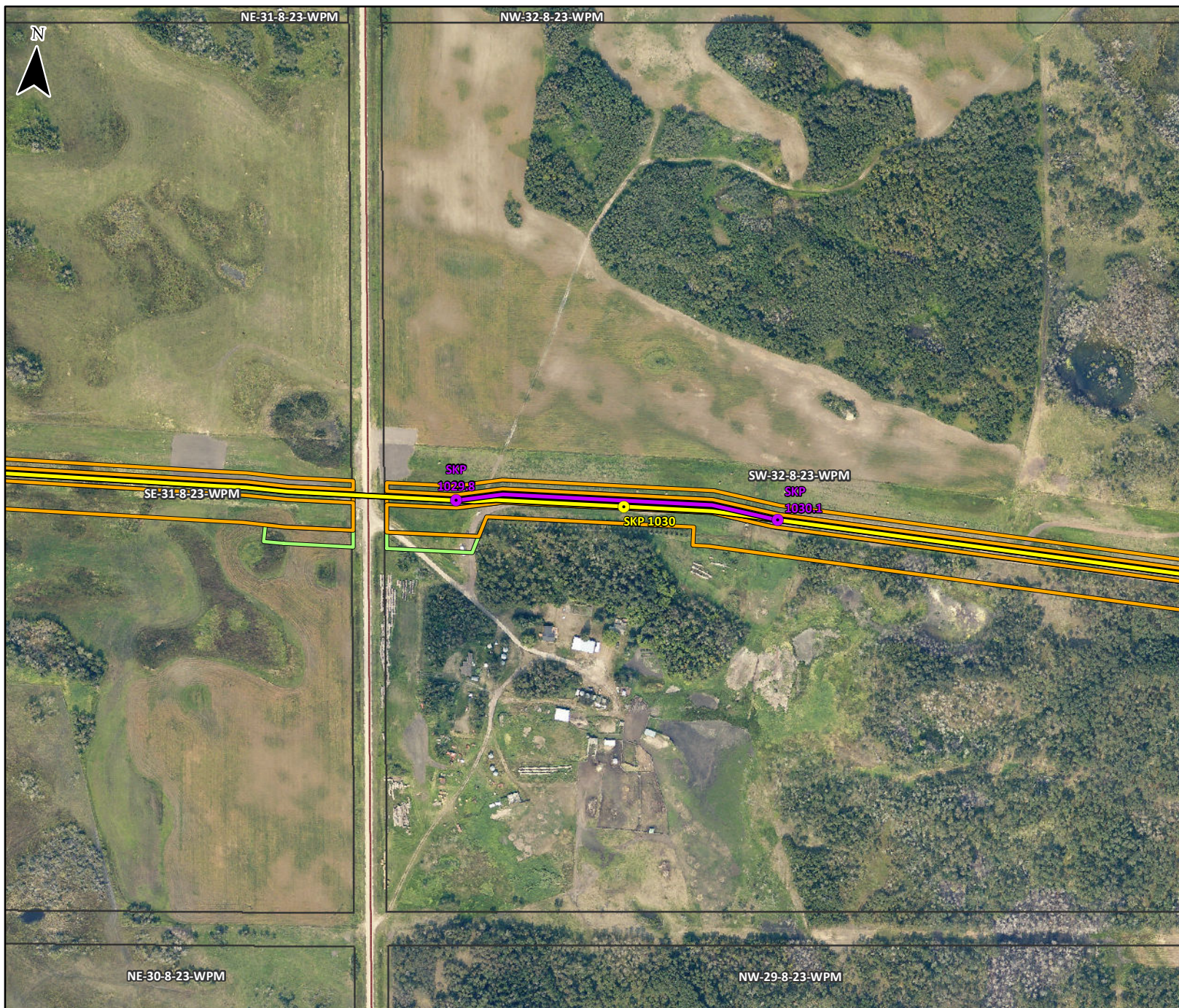


Enbridge Lambert Conformal Conic
Satellite Imagery: Enbridge Pipelines Inc. 2013; licensed by
Pictometry 2012; Roads: JHS Inc. 2015; Railway: NRCan 2012.

Although there is no reason to believe that there are any errors associated with the data used to generate this product or in the product itself, users of these data are advised that errors in the data may be present.

Mapped By: WL Checked By: CN





April 2015

FIGURE A1-45

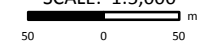
**REROUTE AT
SKP 1029.8 - 1030.1**

**ENBRIDGE PIPELINES INC.
LINE 3 REPLACEMENT
PROGRAM**

10427

- Station Kilometre Post
- Reroute Station Kilometre Post
- Line 3 Replacement Pipeline Route (Route Filed November 5, 2014)
- Line 3 Replacement Pipeline Reroute
- Construction Right-of-Way
- Extra Temporary Workspace
- Access Road/Shoofly
- Enbridge Property Extension
- Existing Enbridge Station/Terminal
- Highway
- Road
- Access/Resource Road
- Railway
- City/Town/Village

SCALE: 1:5,000



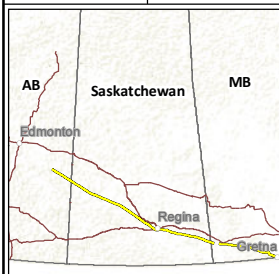
(All Locations Approximate)



Enbridge Lambert Conformal Conic
Satellite Imagery: Enbridge Pipelines Inc. 2013; licensed by
Pictometry 2012; Roads: JHS Inc. 2015; Railway: NRCan 2012.

Although there is no reason to believe that there are any errors associated with the data used to generate this product or in the product itself, users of these data are advised that errors in the data may be present.

Mapped By: WL Checked By: CN





April 2015

FIGURE A1-46

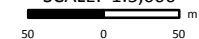
**REROUTE AT
SKP 1036.9 - 1037.2**

**ENBRIDGE PIPELINES INC.
LINE 3 REPLACEMENT
PROGRAM**

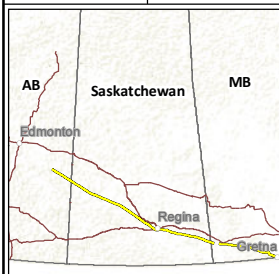
10427

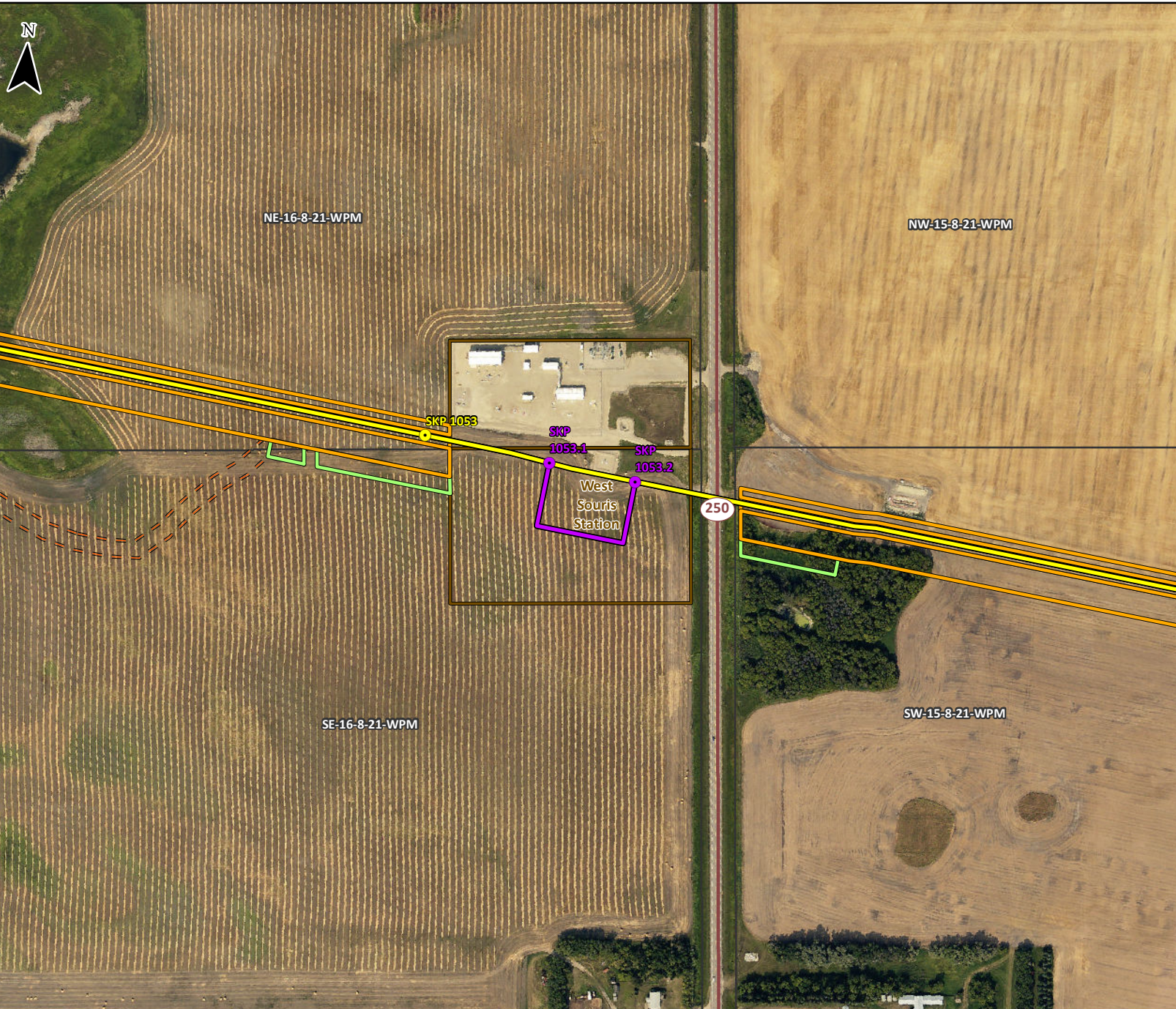
- Station Kilometre Post
- Reroute Station Kilometre Post
- Line 3 Replacement Pipeline Route (Route Filed November 5, 2014)
- Line 3 Replacement Pipeline Reroute
- Construction Right-of-Way
- Extra Temporary Workspace
- Access Road/Shoofly
- Enbridge Property Extension
- Existing Enbridge Station/Terminal
- Highway
- Road
- Access/Resource Road
- Railway
- City/Town/Village

SCALE: 1:5,000



(All Locations Approximate)





April 2015

FIGURE A1-47

**REROUTE AT
SKP 1053.1 - 1053.2**

**ENBRIDGE PIPELINES INC.
LINE 3 REPLACEMENT
PROGRAM**

10427

- Station Kilometre Post
- Reroute Station Kilometre Post
- Line 3 Replacement Pipeline Route (Route Filed November 5, 2014)
- Line 3 Replacement Pipeline Reroute
- Construction Right-of-Way
- Extra Temporary Workspace
- Access Road/Shoofly
- Enbridge Property Extension
- Existing Enbridge Station/Terminal
- Highway
- Road
- Access/Resource Road
- Railway
- City/Town/Village

SCALE: 1:5,000

50 0 50 m

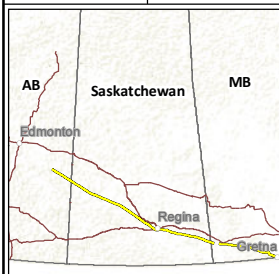
(All Locations Approximate)

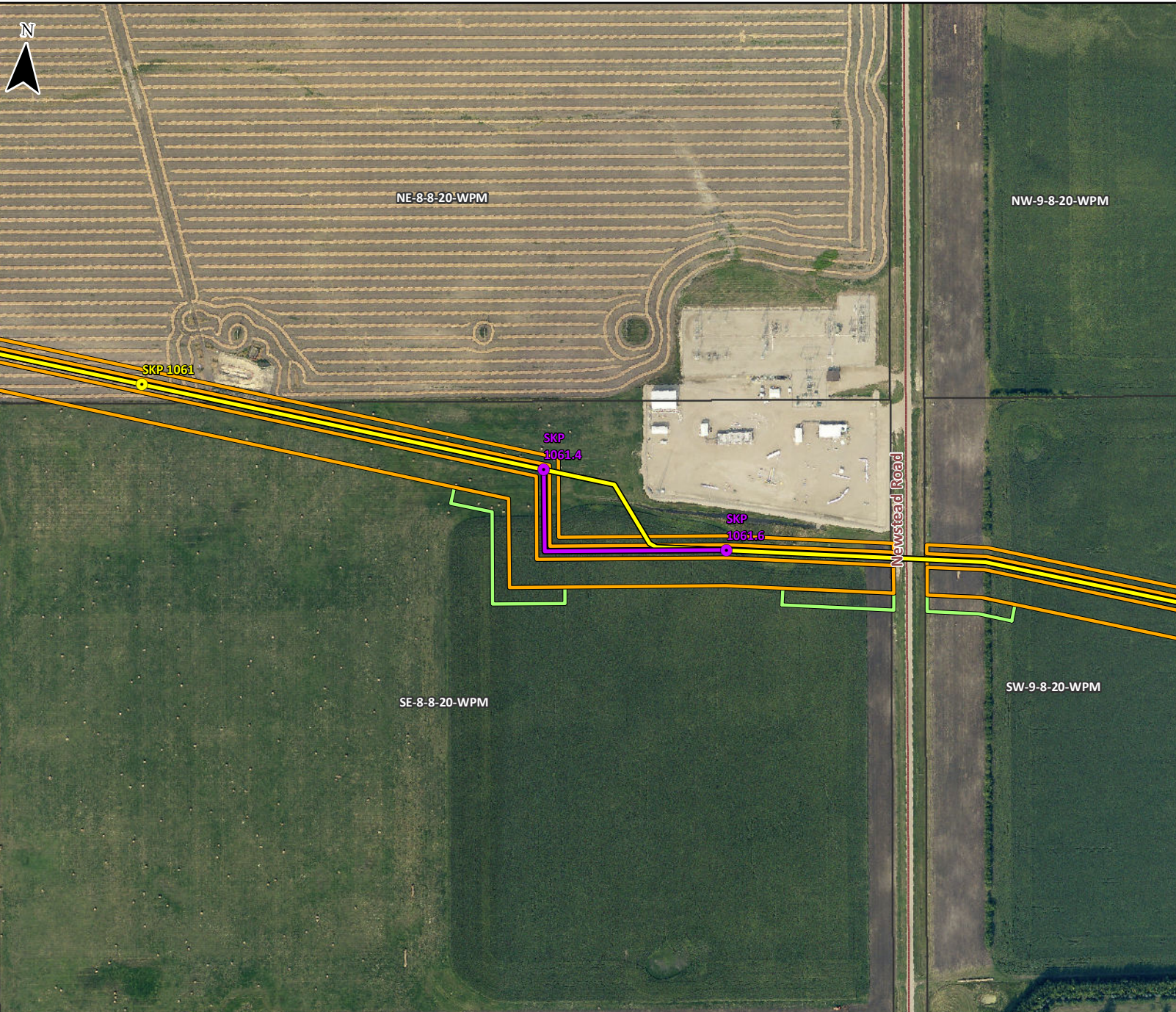
tera A CH2M HILL Company

Enbridge Lambert Conformal Conic
Satellite Imagery: Enbridge Pipelines Inc. 2013; licensed by
Pictometry 2012; Roads: SHS Inc. 2015; Railway: NRCan 2012.

Although there is no reason to believe that there are any errors associated with the data used to generate this product or in the product itself, users of these data are advised that errors in the data may be present.

Mapped By: WL Checked By: CN





April 2015

FIGURE A1-48

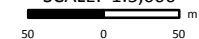
**REROUTE AT
SKP 1061.4 - 1061.6**

**ENBRIDGE PIPELINES INC.
LINE 3 REPLACEMENT
PROGRAM**

10427

- Station Kilometre Post
- Reroute Station Kilometre Post
- Line 3 Replacement Pipeline Route (Route Filed November 5, 2014)
- Line 3 Replacement Pipeline Reroute
- Construction Right-of-Way
- Extra Temporary Workspace
- Access Road/Shoofly
- Enbridge Property Extension
- Existing Enbridge Station/Terminal
- 892 Highway
- Road
- Access/Resource Road
- Railway
- City/Town/Village

SCALE: 1:5,000



(All Locations Approximate)



Enbridge Lambert Conformal Conic
Satellite Imagery: Enbridge Pipelines Inc. 2013; licensed by
Pictometry 2012; Roads: JHS Inc. 2015; Railway: NRCan 2012.

Although there is no reason to believe that there are any errors associated with the data used to generate this product or in the product itself, users of these data are advised that errors in the data may be present.

Mapped By: WL Checked By: CN

